



COVID-19 ISOLATION & QUARANTINE UPDATES

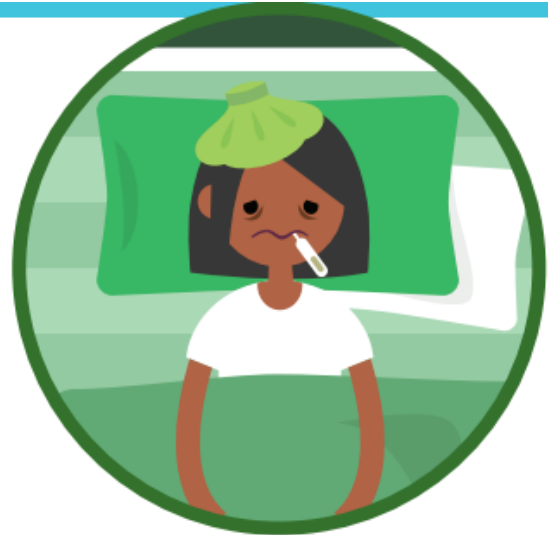
Updated on February 28, 2022

ISOLATION REQUIRED

Positive Test with Symptoms

(Isolation)

- Stay home for 5 days after symptoms began
- Return to school if symptoms much better but must wear mask for days 6–10



Positive Test without Symptoms

(Isolation)

- Stay home for 5 days after test performed
- Return to school but must wear mask for days 6–10

Visit scdhec.gov/COVID19 for more information.

Images used from COVID-19 Exposure Guidance for School Use